

G8 Designs



Gaping Glovebox Repair Kit

For Pontiac G8, Caprice PPV,
& Related Vehicles



(patent applied for)

Preface

Every G8 and Holden Commodore owner has likely experienced the “Gaping Glovebox problem – where the glovebox used to open smoothly and drop to a normal opening. But, the plastic pins snap off in the mechanism, allowing it to just fall wide open onto your passenger’s shins!

This “Gaping Glovebox” repair kit will fix this problem **PERMANENTLY** and restore your glovebox’s original operation and function!

Preface

You might look at this collection of hardware and think it's commonly available at any hardware store. So what's the reason for the asking price of this kit?

- A) This collection of parts is actually quite unique. You might find similar-looking parts locally, but it is the sizes, lengths, and diameters of this particular hardware required to fix your glovebox. This is what's unique and not all will be available at local hardware stores or home centers.
- B) Some of these pieces might be found in one store, but others would take legwork (time/driving around) to find, or ordering them online.
- C) We engineered these parts coming from various hardware sources to fix this specific problem in these cars. We also provide you with these full color instructions giving you the knowledge for easy installation with common tools.
- D) These parts will provide a permanent, quality repair of your "gaping glovebox" and years of trouble-free operation!



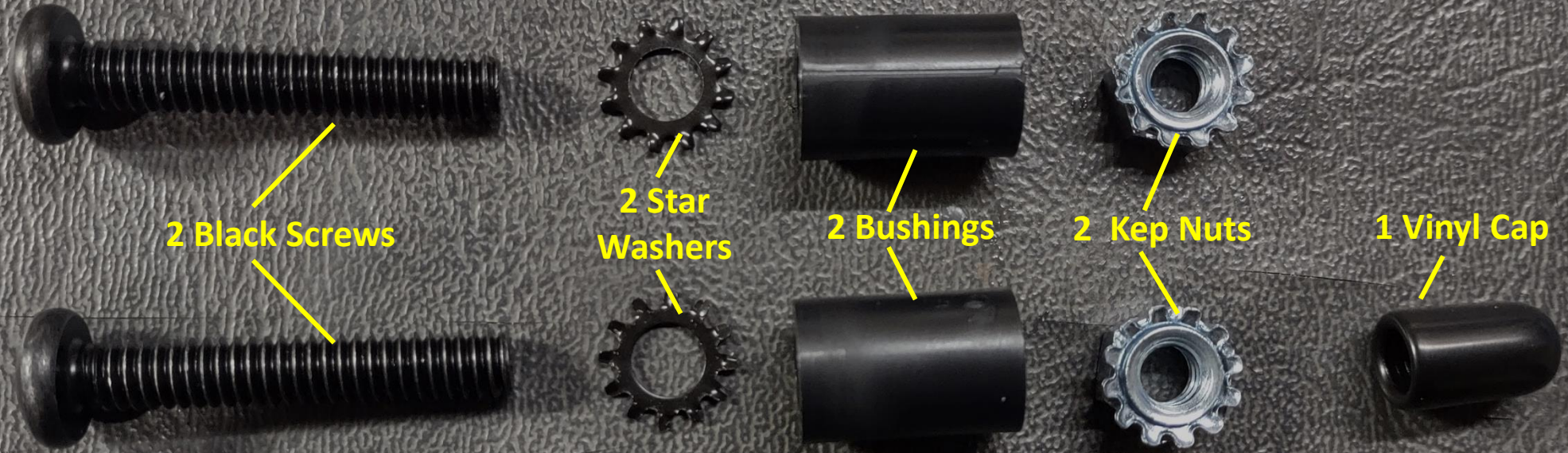
G8 Designs

Kit Components



PONTIAC **G8**

Kit Components



Your Gaping Glovebox Repair Kit comes with the following items:

Kit Components

Left Side Assembly



Right Side Assembly



Your Gaping Glovebox Repair Kit comes with the following items:

Tools You Will Need...

If you're not handy with tools, any experienced car stereo installer or mechanically inclined person can install this kit. Or, you will need these common tools & items to do the installation:

1) Any corded or cordless drill



2) Phillips Screwdriver
(#2 standard bit)



3) 7/16" End Wrench
(or socket/ratchet)



4) 17/64" Drill Bit



5) Pair of flush-cutters
or diagonal cutters





G8 Designs

Step 1: Remove Glovebox

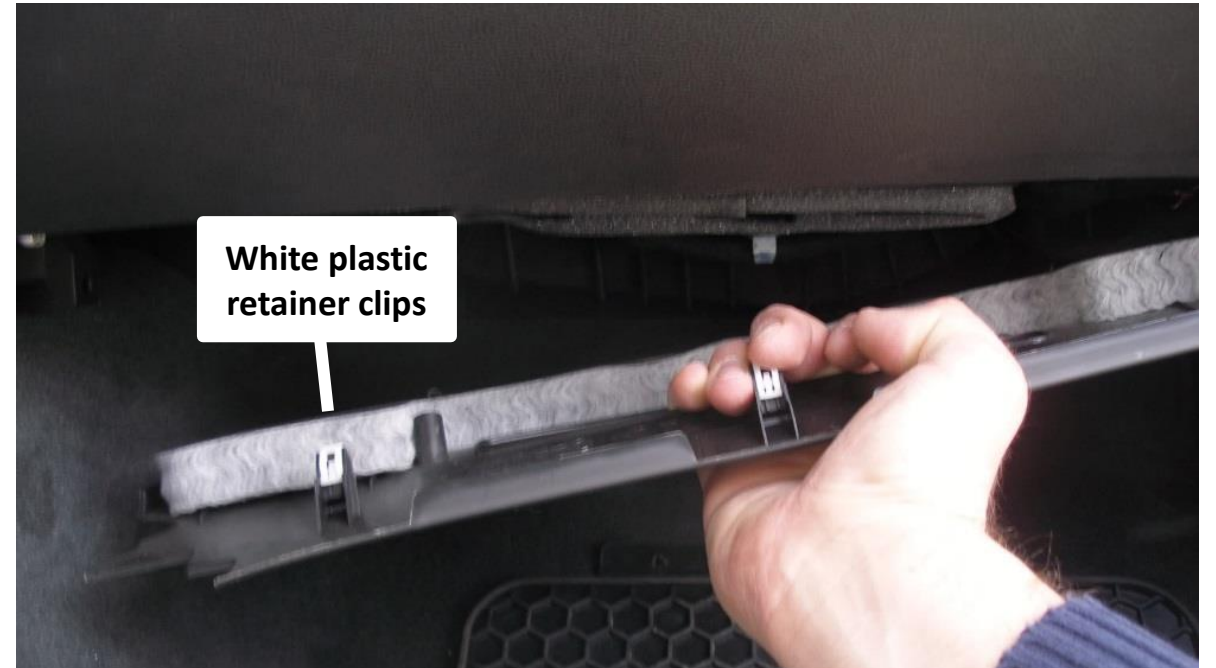




**Remove
Glovebox**

Removing the glovebox...

You first need to remove the lower plastic kick panel beneath the glovebox, which goes between the dash and the firewall, which faces straight downward. The panel is held in place with 6 white plastic retainer clips (famous for cracking and breaking). Simply grab the panel and gently pry it downward.



On the back left side of the glovebox is a small electrical connector that you'll have to disconnect. This is for the trunk release and possibly for an internal glovebox light, if your car is so equipped (only 2008's have a glovebox light).

Removal Of The Glovebox

Remove screw here

Remove screw here

Remove screw here

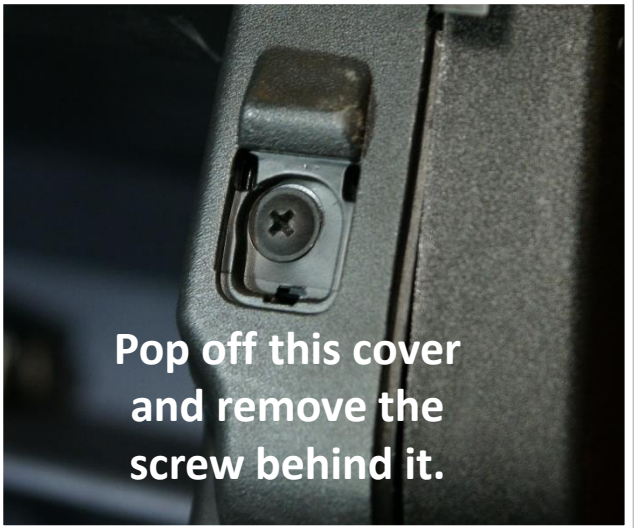
(Silver trim does not have to be removed, but can be easily popped off if desired)

There are 7 screws that hold the glovebox in place. It's a good idea to keep the screws together so they don't get lost.

Pop off this cover and remove the screw behind it.



Pop off this cover and remove the screw behind it.



Pop off this cover and remove the screw behind it.

Remove two screws on underside along hinge area, one on each side



G8 Designs

Step 2: Locate Broken Stop Pins



PONTIAC **G8**

Right Side of Glovebox After Removal

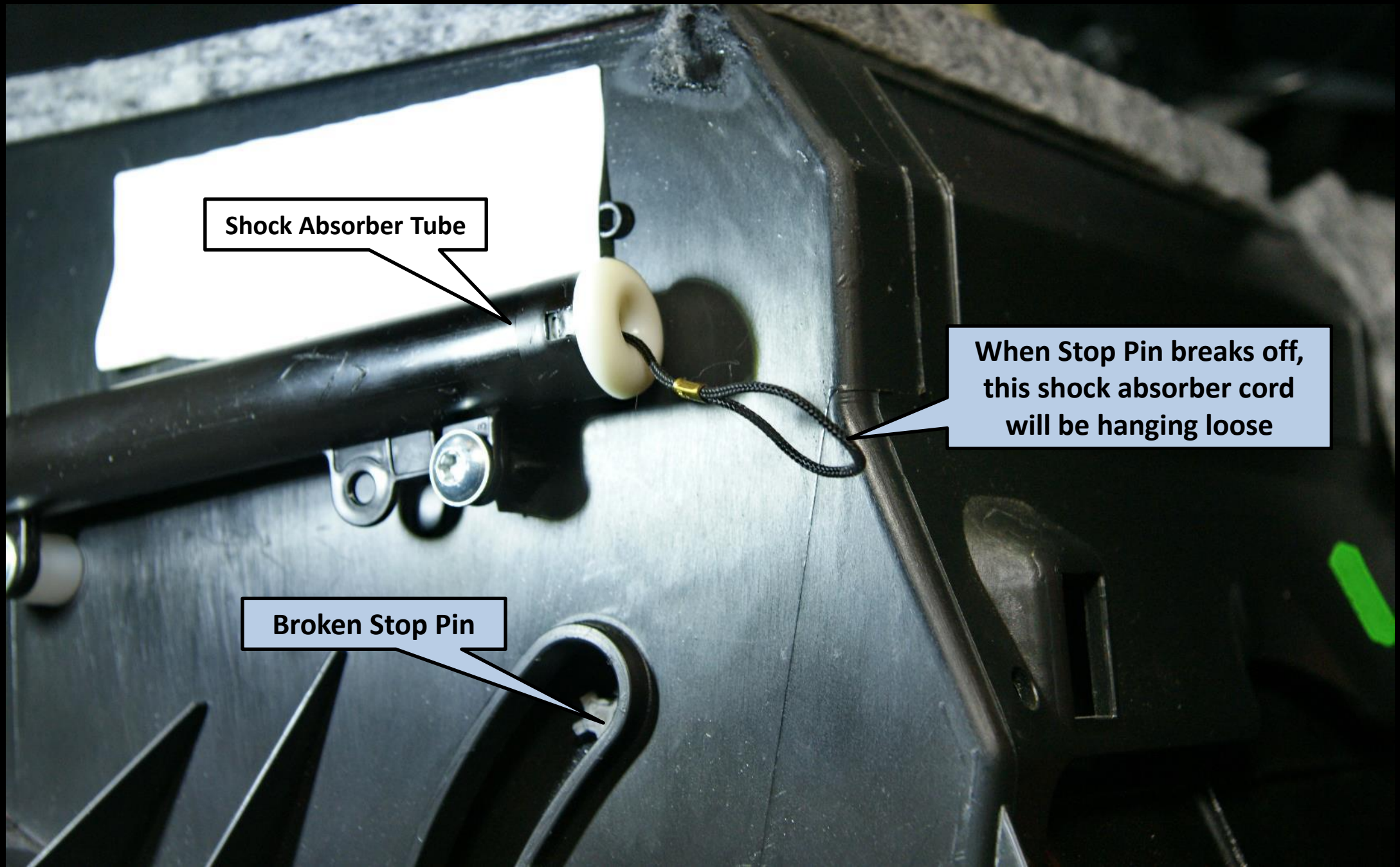
Shock Absorber Tube located on right side of Glovebox that lowers door gently when cord is attached to stop pin

When Stop Pin breaks off, this shock absorber cord will be hanging loose

Broken Stop Pin

Stop Pin Travels Up & Down as Door Opens and Closes

Right Side of Glovebox After Removal



Shock Absorber Tube

When Stop Pin breaks off, this shock absorber cord will be hanging loose

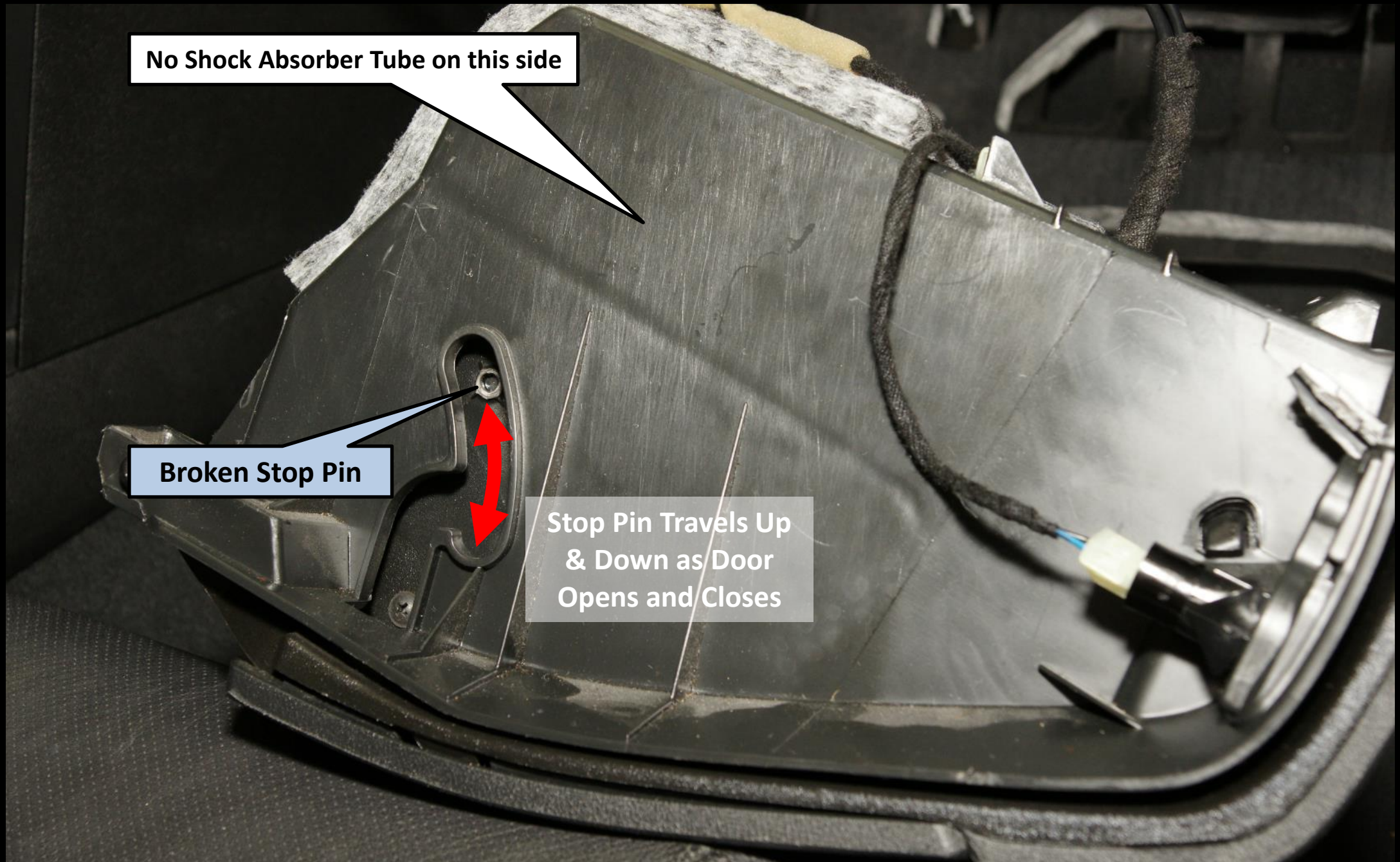
Broken Stop Pin

Left Side of Glovebox After Removal

No Shock Absorber Tube on this side

Broken Stop Pin

Stop Pin Travels Up & Down as Door Opens and Closes






G8 Designs


Step 3: Prep Surface & Drill Holes



Trim the Broken Stop Pin Off Flush



Pull Glovebox door wide open, and use flush cutters, diagonal cutters, Dremel tool, or even a sharp box knife blade to carefully trim excess material from base of broken stop pin. This will provide a smooth surface for drilling the hole.

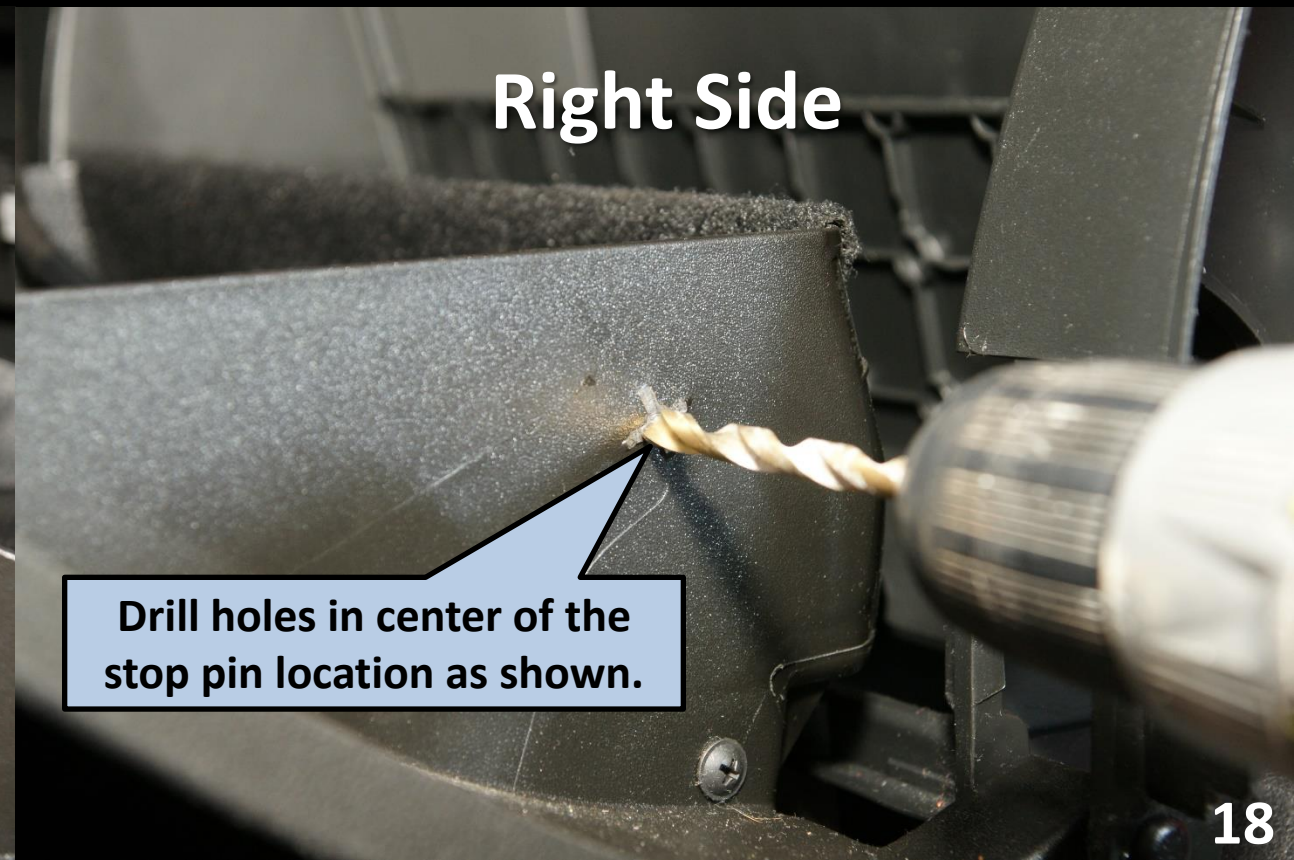
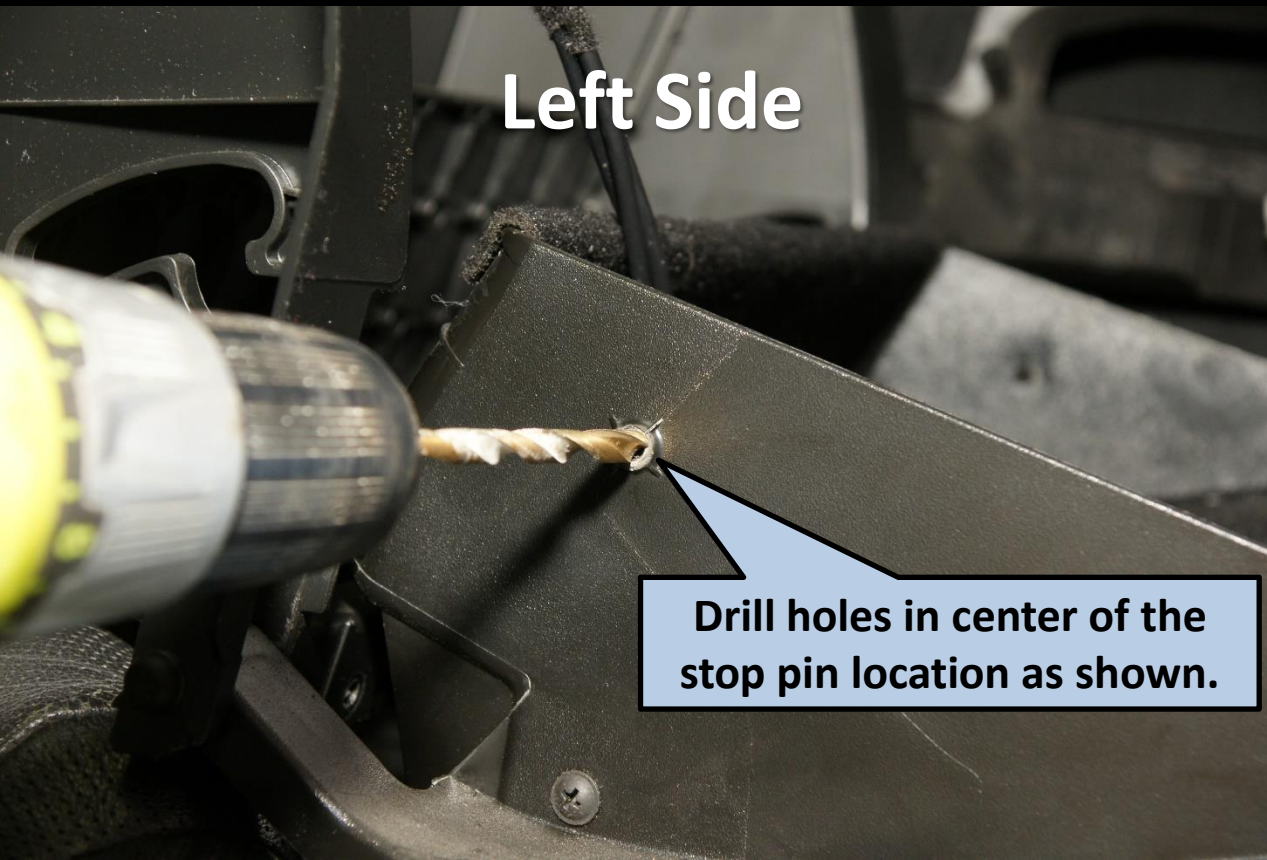


Excess plastic cut away smooth

Don't accidentally cut yourself if using a sharp blade! Use Caution!

Drill Holes For Hardware As Shown

You will drill a clearance hole slightly larger than $\frac{1}{4}$ " on each side so that the screws can be inserted. A $\frac{17}{64}$ " drill bit will provide the proper diameter, or you can run a $\frac{1}{4}$ " drill bit through a few times to enlarge the hole enough for clearance.



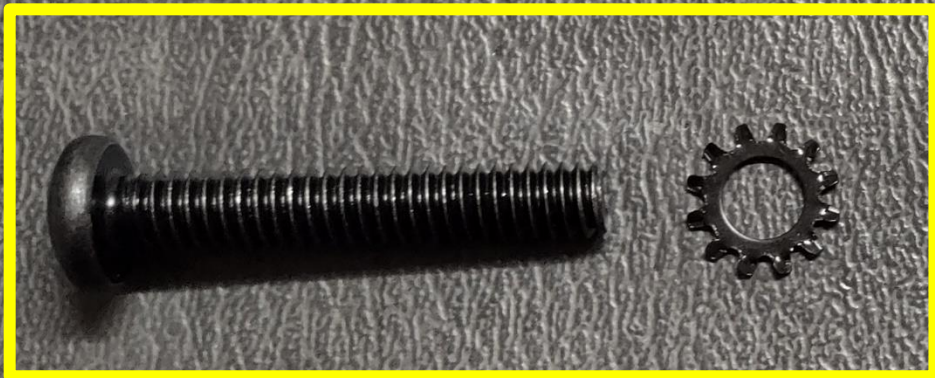


G8 Designs

Step 4: Install Hardware



Hardware Arrangement




Inside Glovebox Wall



Outside Glovebox Wall

Install New Stop Pin Hardware – Left Side



Close Glovebox door almost all the way, align the drilled hole, and insert the supplied black screw as shown through the drilled hole.




Then slide on aluminum bushing and thread on the Kep Nut as shown.

Install New Stop Pin Hardware – Left Side

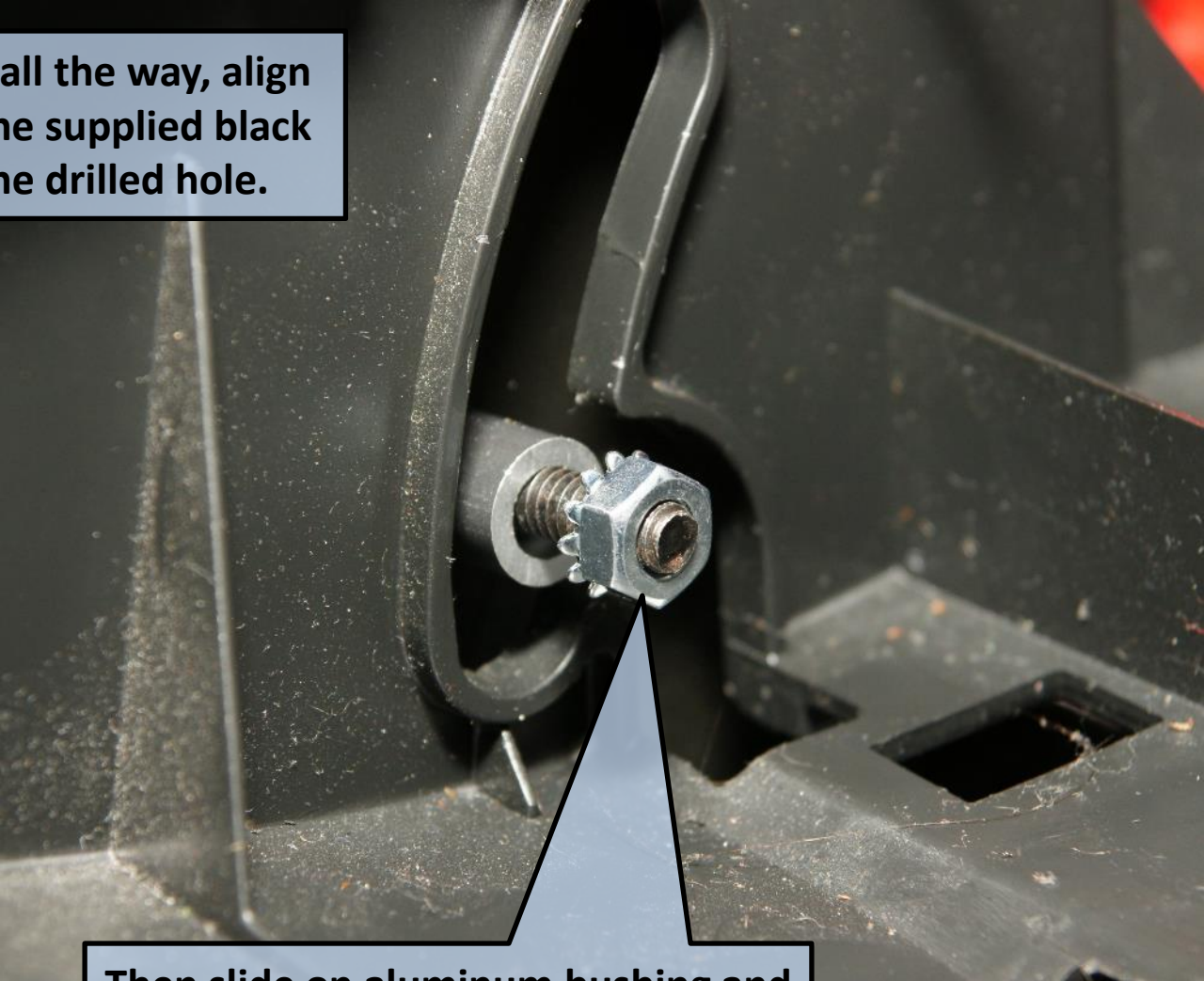


Tighten Nut using Phillips screwdriver on inside and 7/16" wrench or pliers on outside, holding nut.

Install New Stop Pin Hardware – Right Side

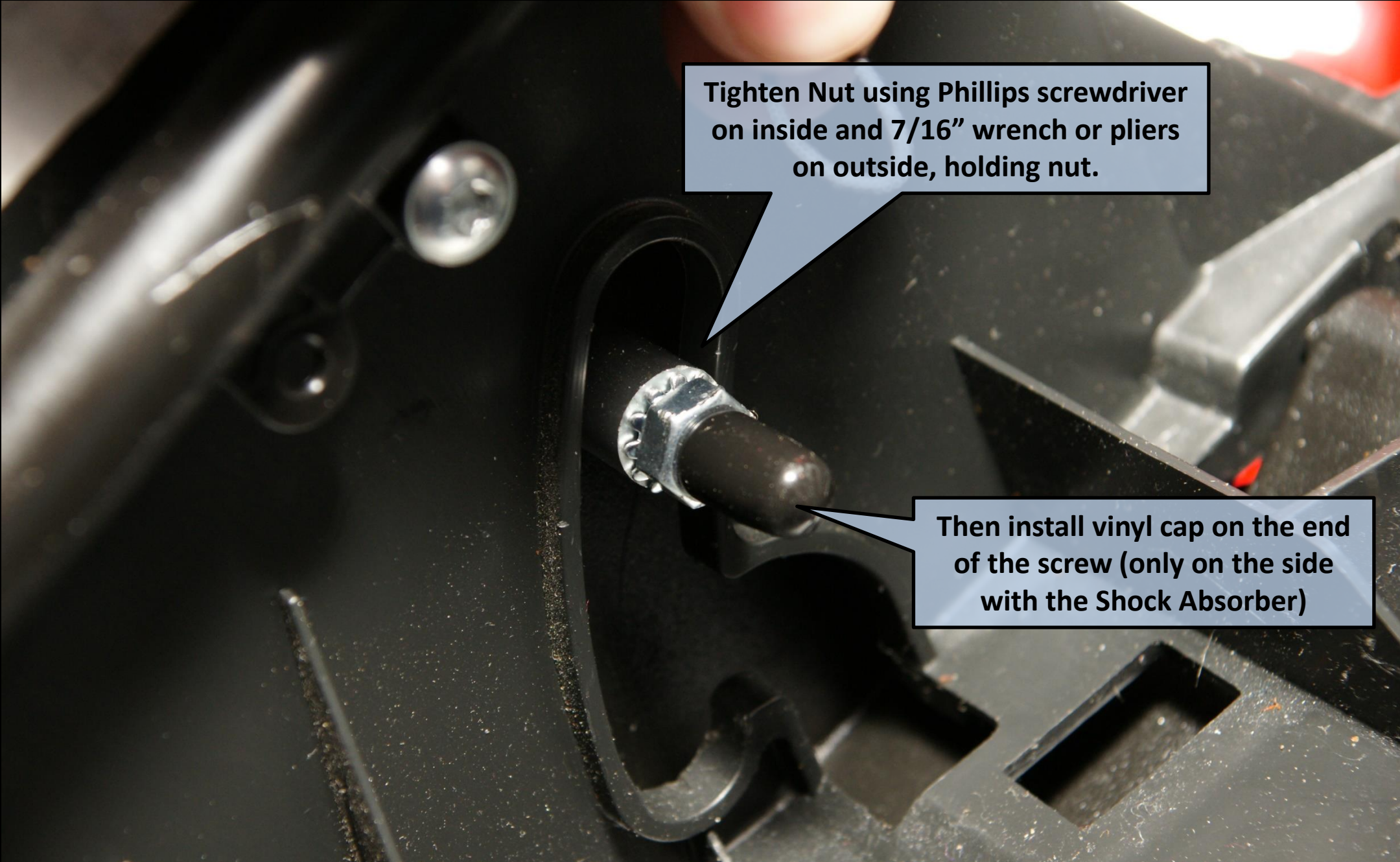


Close Glovebox door almost all the way, align the drilled hole, and insert the supplied black screw as shown through the drilled hole.



Then slide on aluminum bushing and thread on the Nut as shown.

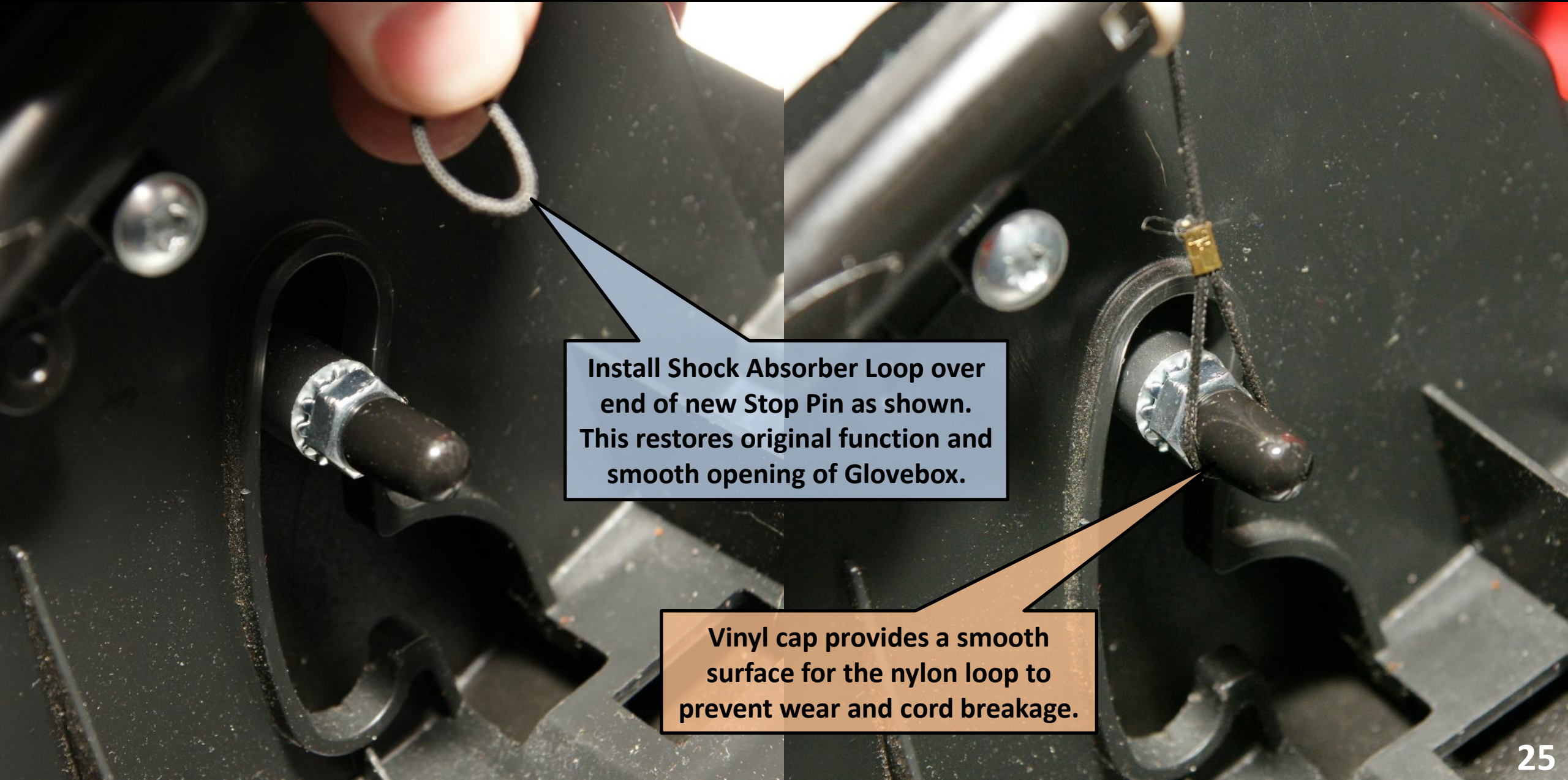
Install New Stop Pin Hardware – Right Side



Tighten Nut using Phillips screwdriver on inside and 7/16" wrench or pliers on outside, holding nut.

Then install vinyl cap on the end of the screw (only on the side with the Shock Absorber)

Install New Stop Pin Hardware – Right Side



Install Shock Absorber Loop over end of new Stop Pin as shown. This restores original function and smooth opening of Glovebox.

Vinyl cap provides a smooth surface for the nylon loop to prevent wear and cord breakage.



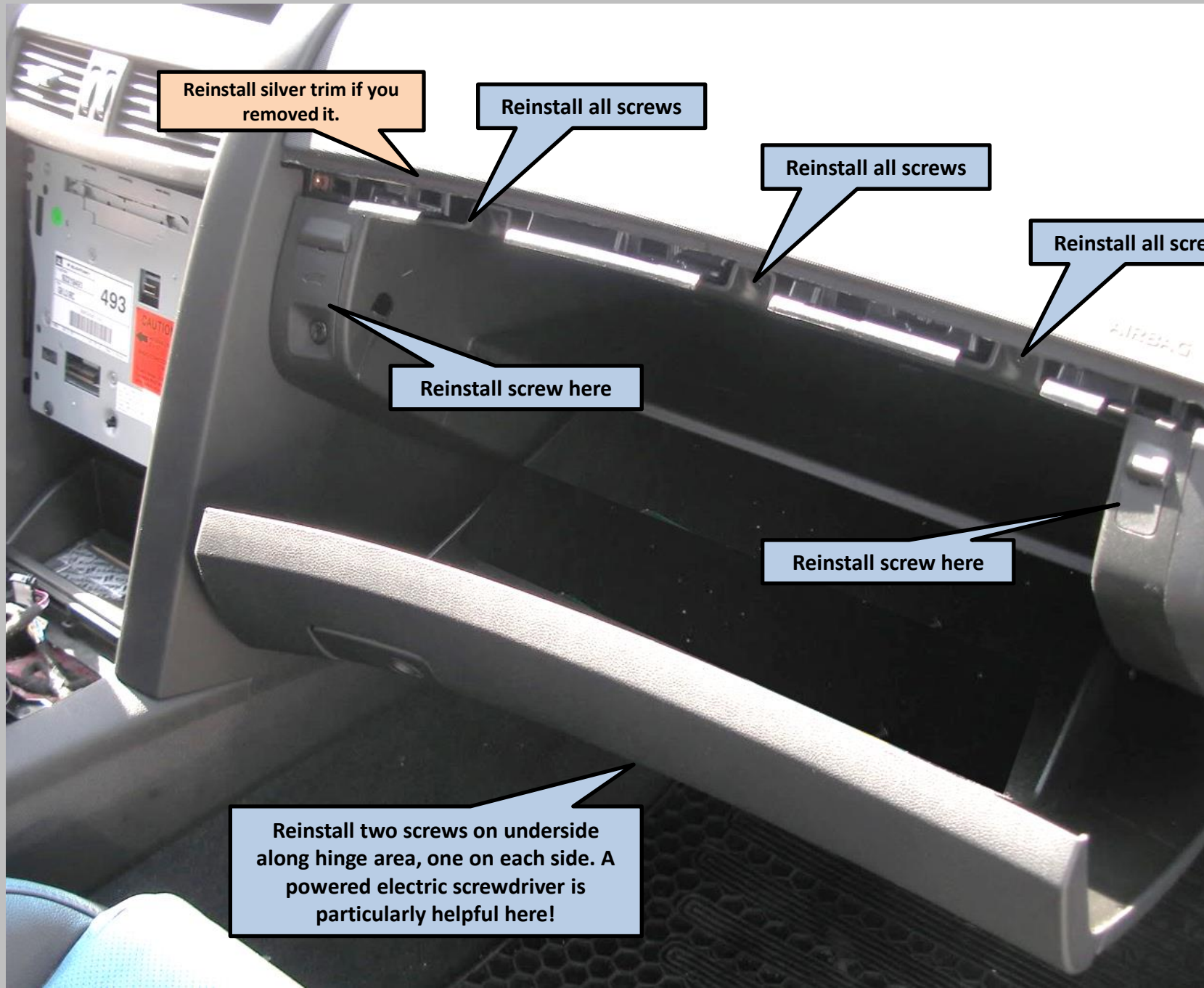
G8 Designs

Step 5: Reinstall Glovebox



PONTIAC **G8**

Reinstall The Glovebox



Reinstall silver trim if you removed it.

Reinstall all screws

Reinstall all screws

Reinstall all screws

Reinstall screw here

Reinstall screw here

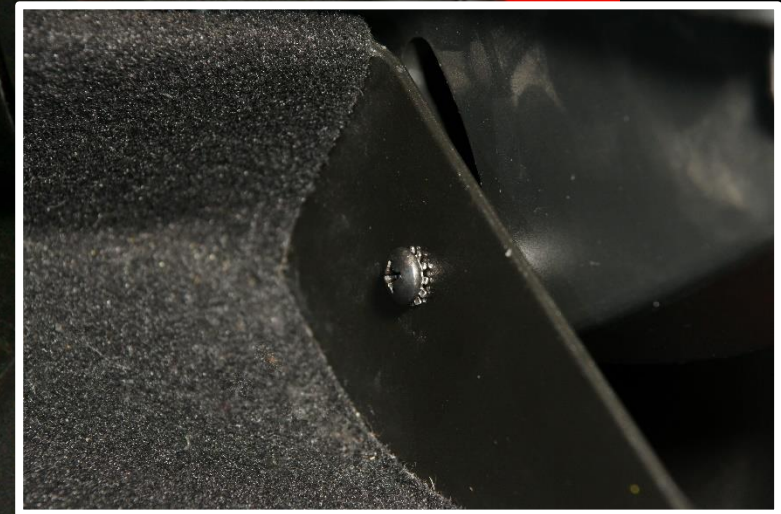
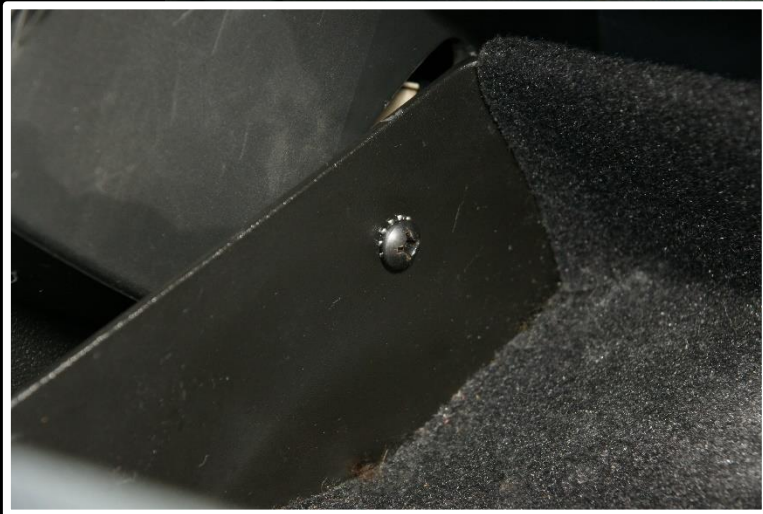
Reinstall two screws on underside along hinge area, one on each side. A powered electric screwdriver is particularly helpful here!

Reinstall Under-Dash Panel

Make sure all your white plastic retainer clips are in place on the under-dash panel and carefully push it back up into position. It should snap back in place and be flush, and not catching passenger's feet or hanging down.



Glovebox Now Operates Smoothly and Opens To Correct Position



Our Other Fine Products for the G8

G8Designs

Innovative products for Pontiac G8 & Holden variants

CLICK "SEND MESSAGE" to chat LIVE or email us at:

G8DESIGNSFL@GMAIL.COM



Ban the Honeycomb!



From this...

\$60

FREE US Shipping!

G8 Designs Rear Filler Panel

To this!

G8 Designs Dash Kit



\$650

FREE US Shipping!
(Stereo NOT included!)

Stainless EL Backlit Door Sills

\$200

FREE US Shipping!



G8 Designs



END

Thank you for supporting this product, and we hope you will help us spread the good word about G8 Designs!

